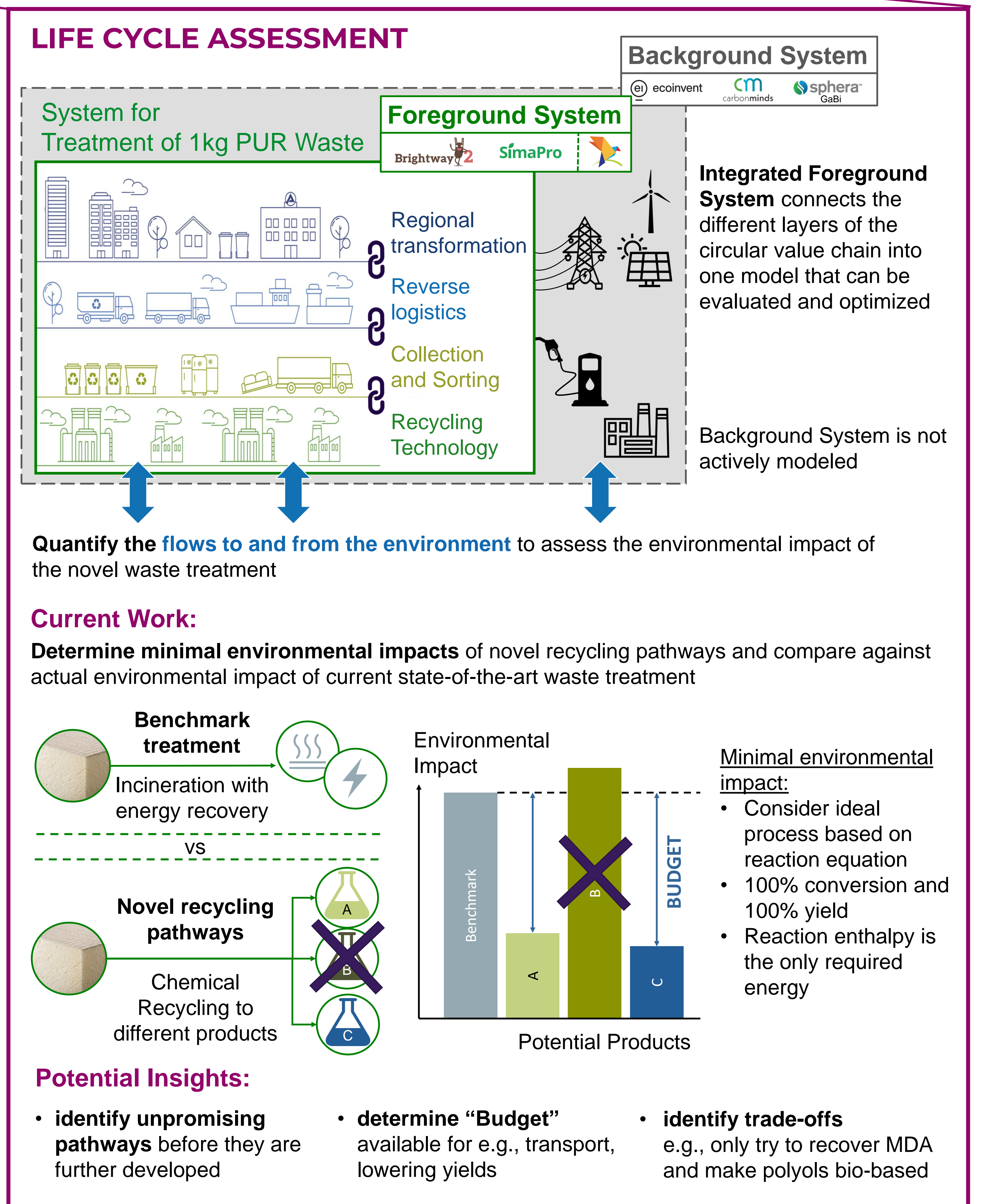
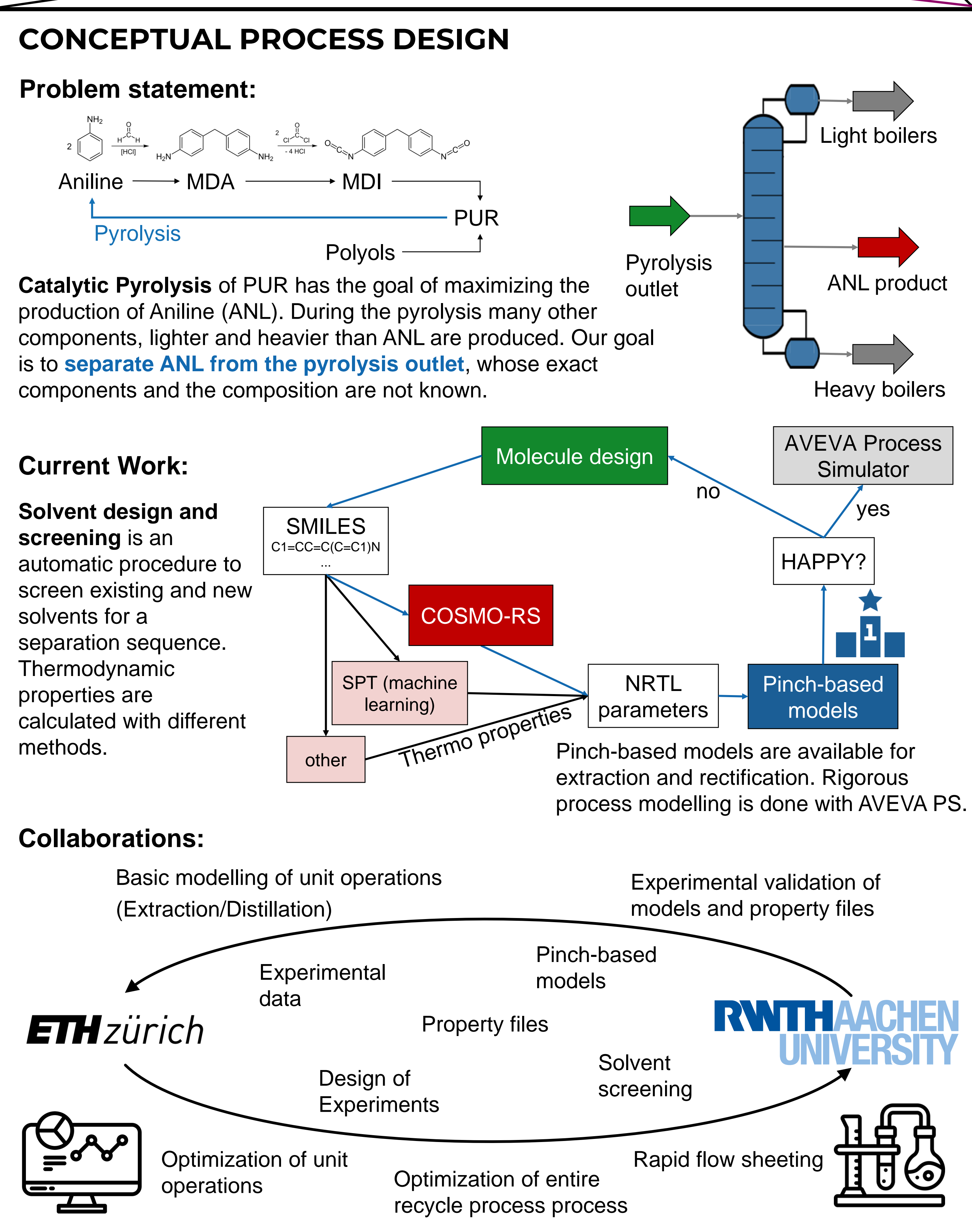
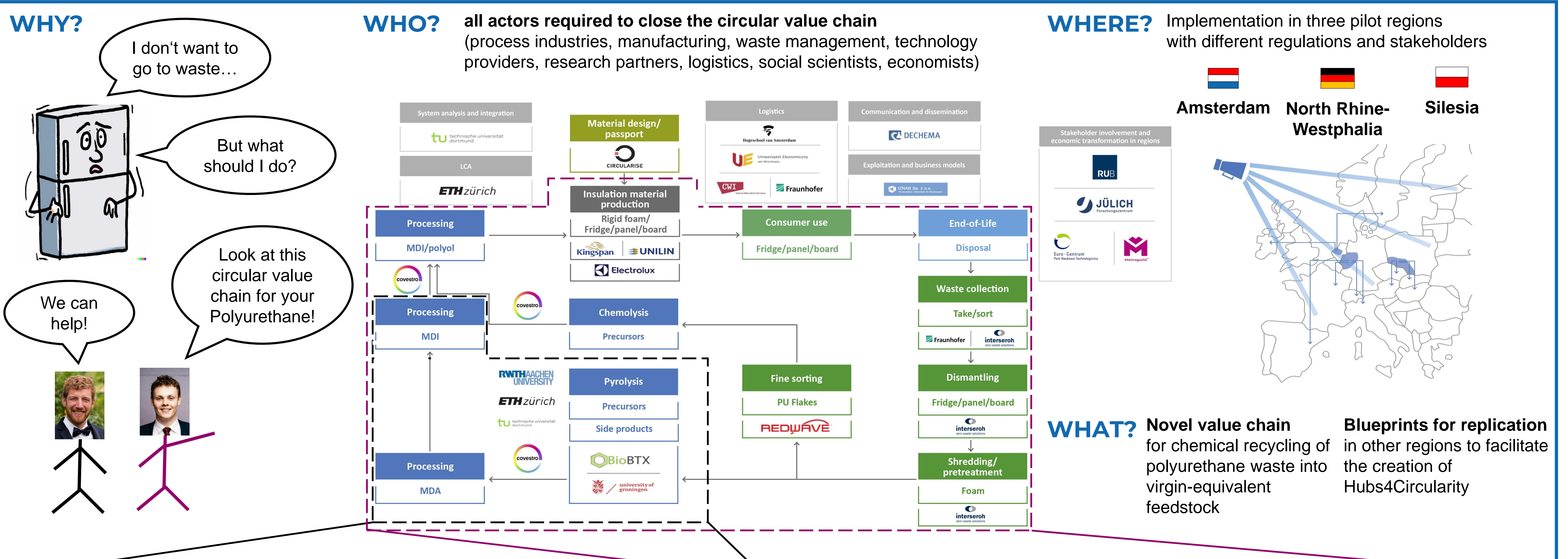


Project: CIRCULAR FOAM

Process Design and Life Cycle Assessment for the Chemical Recycle of end-of-life Polyurethane Foams

Luca Bosetti, Martin Pillich, André Bardow

Energy & Process Systems Engineering, ETH Zurich, Switzerland



REFERENCES

Scheffczyk, J.; Schäfer, P.; Fleitmann, L.; Thien, J.; Redepenning, C.; Leonhard, K.; Marquardt, W.; Bardow, A. COSMO-CAMPD: A Framework for Integrated Design of Molecules and Processes Based on COSMO-RS. *Mol. Syst. Des. Eng.* **2018**, 3 (4), 645–657.

Fleitmann, L.; Kleinkorte, J.; Leonhard, K.; Bardow, A. COSMO-SusCAMPD: Sustainable Solvents from Combining Computer-Aided Molecular and Process Design with Predictive Life Cycle Assessment. *Chem. Eng. Sci.* **2021**, 245, 116863.

Meys, R.; Frick, F.; Westhues, S.; Sternberg, A.; Klankermayer, J.; Bardow, A. Towards a Circular Economy for Plastic Packaging Wastes – the Environmental Potential of Chemical Recycling. *Resour. Conserv. Recycl.* **2020**, 162 (July), 105010.

CONTACT

Luca Bosetti and Martin Pillich
Energy & Process Systems Engineering
Tannenstrasse 3
8092 Zürich
Phone: +41 44 63 25634/38964
bosettil@ethz.ch; mpillich@ethz.ch
https://epse.ethz.ch/ @EPSE_ETH

ACKNOWLEDGMENTS

The project has received funding from the European Union's Horizon 2020 research and innovation programme under grant agreement No 101036854

